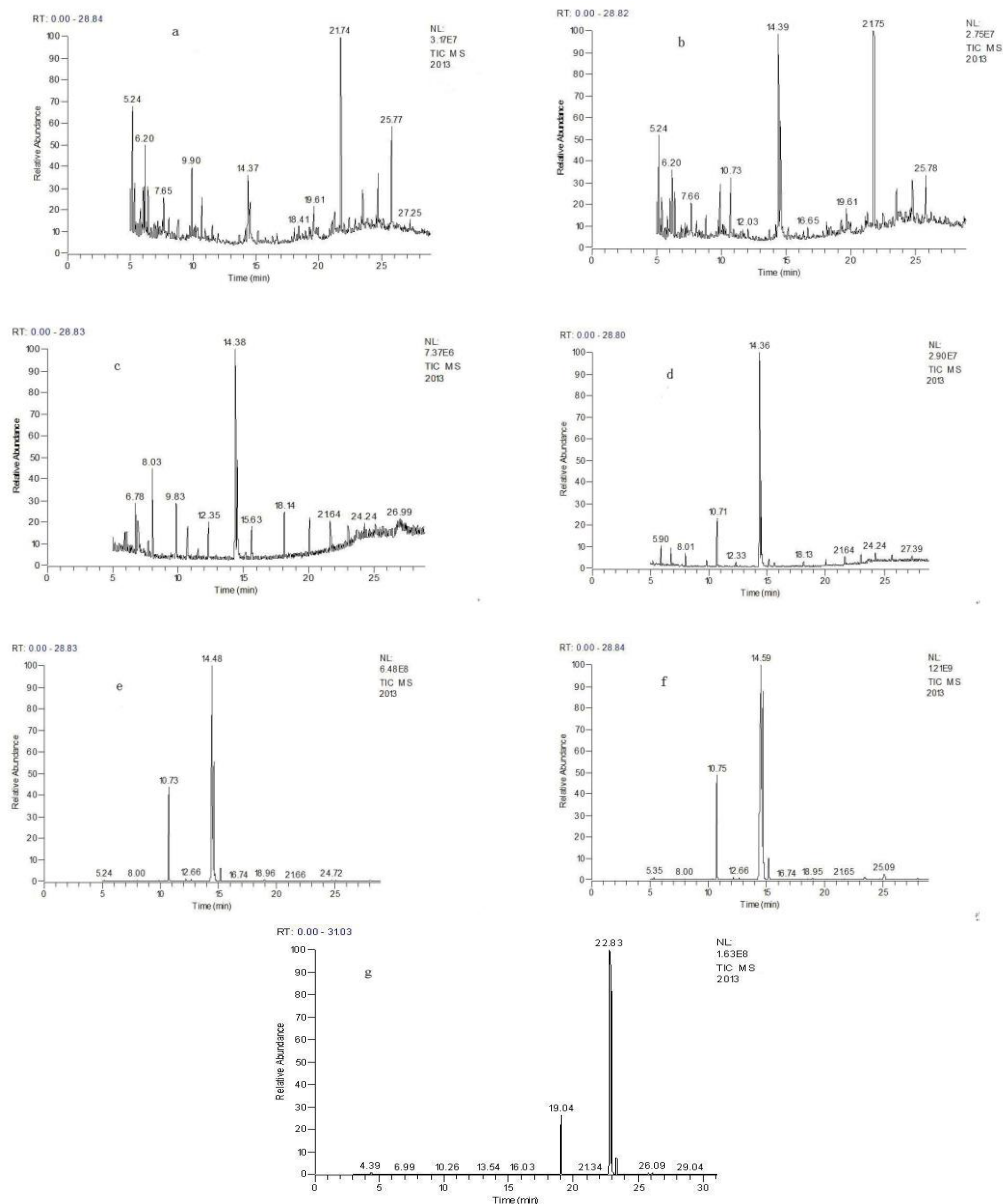


Supplementary Data



**Fig. 1S a–h:** Images of the sectioned fruits of *S. tonkinensis* at 20 (2×) (a), 40 (1.25×) (b), 60 (0.7×) (c), 80 (0.7×) (d), 100 (0.7×) (e), 120 (0.7×) (f) and 140 (1.25×) (g) DAF took by stereomicroscopy, and of the ripe seeds (h) by smartphone camera. In c, d and e, the integer fruit is also shown. Ec: endocarp, Es: endosperm, Eb: embryo, P: pericarp, SE: seed with endocarp, SR: seed with inner and outer pericarp removed.



**Fig. 2S a-g:** Total ion chromatograms of methyl esterified fatty acids of oil from *S. tonkinensis* seeds harvested at 20 (a), 40 (b), 60 (c), 80 (d), 100 (e), 120 (f) and 140 (g) days after flowering, which were drawn using the MSD chemistry workstation.